

HIGHLIGHTS OF CMRH, ONCOLOGY

- Integrated Tumour board discussions with treatment based on standard internationally accepted guidelines.
- Protocol based treatment.
- Qualified team of super specialists.
- Prevention programmes including screening for early detection of cancer.
- Best Radiation Oncology facility available in Mysuru (with 5 electrons energy).
- Integrated personalized treatment at a very affordable cost.
- State of the art imaging and technology to identify cancers at their infancy.
- Multi slice helical CT , Digital mammography , Sono mammography Endoscopies (Gastro Scopy , Colonoscopy , bronchoscope) ERCP , endoscopic ultrasound for maximum precision.
- A centralized lab with all the bio markers and a dedicated Oncopathologist to identify cancer.
- All Biomarkers and Immunohistochemistry being done in the lab.
- Palliative care in all forms for patients with advanced cancer to provide pain relief , nutritional support and surgeries to relieve pain , jaundice and intestinal obstruction.



ClearMedi Radiant Hospital

Clearmedi Radiant hospital has launched the most advanced, comprehensive and best multi-speciality hospital at Mysore, Karnataka. It has been established with a vision to be deliver the best and cost effective healthcare services to the community and also to become the most preferred destination for comprehensive medical care and treatment. Our Mission is to extend the world-class healthcare services to the community through advanced medical technology, medical research and best management practices by the team of dedicated doctors. Clearmedi Radiant Hospital has all major medical specialities, investigative and diagnostics facilities using advanced technology under one roof.

24x7 Emergency Helpline : 0821 - 2336666 / 9343 108 108

ClearMedi Radiant Hospital

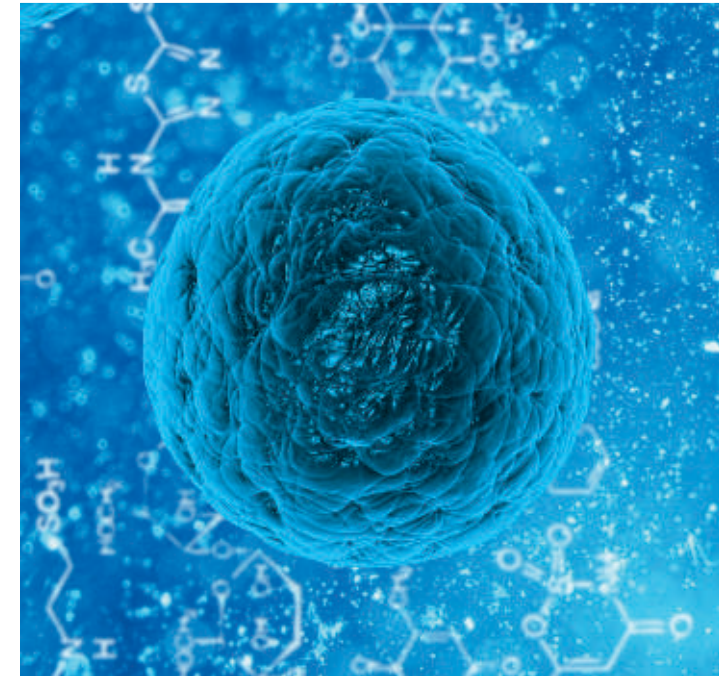
NO.2 C-1, A-1 Block. 3rd Stage, Vijayanagar, Mysuru - 570017.
www.clearmedi.com

ClearMedi Radiant Hospital

DEPARTMENT OF ONCOLOGY



FIGHTING CANCER EVERY STEP OF THE WAY



DEPARTMENT OF COMPREHENSIVE ONCOLOGY

Dr. Avinash C.B.

M.B.B.S., M.D., D.M.

(Medical Oncology), ECMO.

Sr. Consultant Medical Oncologist

Areas of interest.: Leukemia's ,
All solid tumours, and Stem cell
transplantation. Immunotherapy, Targetted
therapy and all forms of chemotherapy.



Dr. Chaitra Katakol

M.B.B.S., M.D (Radiotherapy).

Consultant Radiation Oncologist

Areas of Interest : Breasts and
Gynaecological Malignancies.



Dr. Rajeev A G

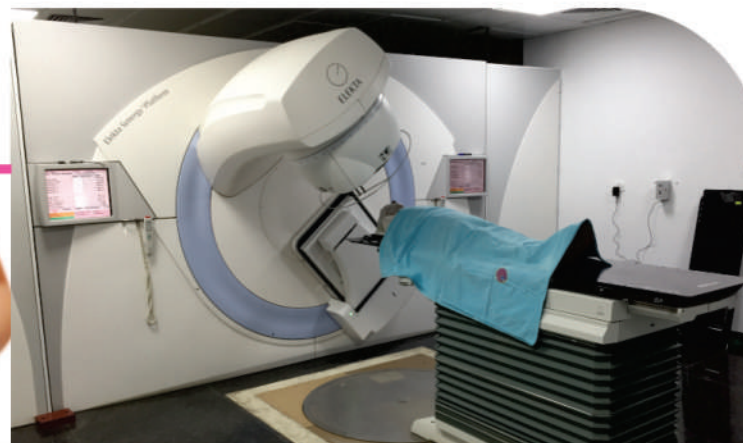
MBBS, MD, MBA

Chief Radiation Oncologist.

Dr. Rajeev AG is our Radiation

Oncologist, 15years of Experience
in the field. He has treated over 7000 patients till date.

Dr. Rajeev was a Radiation Oncologist previously a
Consultant and Associate prof. from M S Ramaiah
Medical College. He is the founder member of the
RadiantInstitute and current ClearMedi Radiant Hospital.



Facilities Available:

Medical Oncology :

- ➔ Personalized Cancer Chemotherapy.
- ➔ State of the art Day care Chemotherapy center
- Facilities for In-patient wards and Private rooms for
Chemotherapy, with trained oncology nurses.

Radiation Oncology :

- ➔ State-of-the-art linear accelerators
- ➔ Three-dimensional conformal radiation therapy (3-D CRT)
combining digital diagnostic imaging, powerful computers
and specialized software to tailor or "conform" the radiation
beam to the shape of the tumor.
- ➔ Intensity-modulated radiation therapy (IMRT), the latest
advance in 3-D CRT, permitting delivery of high-dose
radiation to a tumor while minimizing dose to other tissues.
- ➔ Stereotactic radiosurgery, which uses precisely focused
radiation to treat tumors and other abnormal growths
in the brain, without any incision.
- ➔ Whole-body radiation in conjunction with the bone
marrow transplant program.
- ➔ Brachytherapy, in which tiny radioactive "seeds" are
implanted to treat prostate cancer.
- ➔ High-dose rate brachytherapy, which delivers radiation
to the prostate without implants.
- ➔ Radioimmunotherapy, using monoclonal antibodies that
deliver radioactive isotopes directly to tumor cells.
- ➔ Radioactive plaques for ocular melanoma.

Surgical Oncology :

- ➔ Optimum Tumour control with maximum preservation of
organ function so that the patient returns to normal
activity as early as possible is what we believe in.
- ➔ Complex Head and neck resections and Reconstructions.
- ➔ Complex resections for advanced malignancy.
- ➔ Gastric intestinal and Gynecological Resections.
- ➔ Organ preserving surgery (breast and limb conservation)
- ➔ Chemoport insertions.
- ➔ Surgery for palliation.

